

# Stay Covered in Arizona and Beyond

Local strength. Nationwide reach.



## More Access. More Support. One Seamless Network.

Your EMI Health medical plan includes local and nationwide network access through trusted partners.

With your EMI Health medical plan, Arizona members are contracted with Blue Cross Blue Shield of Arizona™ for in-state, in-network care, and to the First Health® network nationwide—with Care Plus™ network in Utah.

**Front of card**

**EMI HEALTH™**

**Member**

Subscriber Name: ID: 2477XXXXXX

**Medical Plan**

A 3000 6000 100%

Office Tier 1 | 2: \$10 | \$30  
Specialist Tier 1 | 2: \$20 | \$60 Urgent: \$75  
DED INN: \$3,000 | \$6,000  
OOP INN: \$6,000 | \$12,000

**Pharmacy Plan**

Rx BIN: 610014  
Rx GRP: EMARXD EXPRESS SCRIPTS®  
Retail: (30 day) \$15 | \$35 | \$70

**Telemedicine**

855-673-2876

**Arizona Medical Network**

PPO Group #: EMH222  
PPO EDI #: 53589

**Dental Plan**

Summit Plus Indemnity  
Cigna Group #: 0196734  
Electric Payer ID #: 62308  
PO Box: 188061  
Chattanooga, TN 37422-8061

**Vision Plan**

VSP Choice Plus 10-160

**Back of card**

**Claims Submission**

Medical Claims in AZ: BCBSAZ providers/facilities in Arizona must submit EDI claims to BCBSAZ using EDI # 53589 or PO Box 2924, Phoenix, AZ 85062-2924.

Arizona Network provided by Blue Cross Blue Shield of Arizona (BCBSAZ), an independent licensee of the Blue Cross and Blue Shield Association. BCBSAZ provides network access only and provides no administration or claims payment services and does not assume any financial risk or obligation with respect to claims. No network access is available from Blue Cross and Blue Shield plans outside of Arizona.

All Other Claims  
EMI Health Payer ID: SX110  
or PO Box 21462  
Eagan, MN 55121

**BlueCross BlueShield of Arizona**

**Customer Service / Eligibility**

1-800-662-5851  
cs@emihealth.com  
www.emihealth.com

**Pre-Authorizations**

This card does not guarantee coverage. Please confirm eligibility and benefits prior to services.

Prior authorization is required for inpatient admission, outpatient surgery and other services prior to receiving care or within 48 hours in an emergency. See plan for full list.

Pre-authorizations: Call 888-223-6866 or email preauthorization@emihealth.com

**Outside AZ Medical Networks**

In Utah, All states outside of AZ/UT  
AZ-GA-ID-TX-UT

Care Plus  
First Health  
Tier 1 Elite

**Dental Networks**

Cigna DPPO SA Plus

\*Your EMI Health ID card will show the same medical network setup, but may include different products—like dental or vision—based on your plan.

## Important Tips When Scheduling Care

### 1. EMI Health is your insurance carrier.

Your provider may not recognize EMI Health by name, so it's important to identify the correct network based on where you're receiving care:

- In Arizona: "My contracted network is Blue Cross Blue Shield of Arizona."
- In Utah: "EMI Health's Care Plus is my assigned network."
- In all other states: "My contracted network is the First Health network."

### 2. Always show your EMI Health ID card to providers.

It lists your network and the correct claims submission address on the back of the card (see highlighted area).

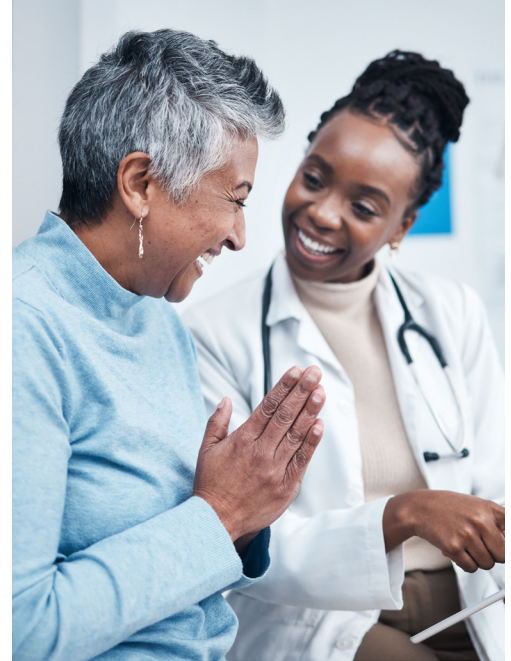
### 3. Claims must be submitted according to the instructions on the back of the card, as submission details may differ depending on the network used (see additional provider instructions on second page).\*

### 4. For eligibility verification providers should call the EMI Health Customer Service number listed on your ID card.

Have questions or need help finding a provider? Call our Customer Support Team: (800) 662-5851  
Monday-Friday 6:00 am 6:00 pm MST

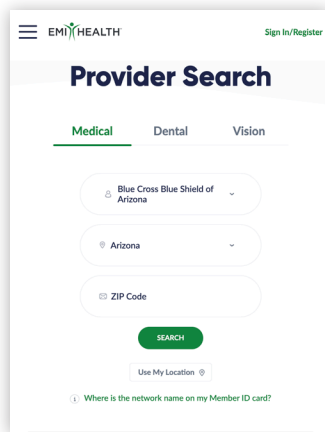
## Why You'll Love These Networks

- ✓ Comprehensive local access with over 20,000 providers across Arizona through Blue Cross Blue Shield of Arizona™
  - ▶ Includes major systems like Mayo Clinic, HonorHealth, and Dignity Health
  - ▶ Connects you to top-rated specialists, primary care, urgent care, and hospitals statewide
- ✓ Seamless nationwide coverage when you travel—through the First Health® network
  - ▶ Over 1 million providers and 5,000 hospitals across all 50 states
- ✓ Contracted rates help lower your out-of-pocket costs and protect you from surprise bills
- ✓ Coverage that follows you—whether you're traveling for work, school, or vacation



EMLMKTG.BCBSAZNETWORKOVERVIEW.1.2.25.1487

## Search for In-Network Doctors and Facilities



### Find In-Network Providers

Use our online tool to search for doctors, specialists, and hospitals:

1. Visit: [emihealth.com/ProviderSearch](https://emihealth.com/ProviderSearch)
2. Select State when prompted
3. Select your network based on location:
  - Arizona: Blue Cross Blue Shield of Arizona™
  - Utah: Care Plus™
  - Other states: First Health®
4. Use the filters to narrow results

**\* Blue Cross Blue Shield of Arizona Providers:** Blue Cross Blue Shield of Arizona is the “assigned contracted network.” Claims should be sent to BCBSAZ using EDI Payor ID # 53589 or PO Box 2924 Phoenix AZ 85062-2924 (as shown on back of member ID card). Claim should include the Member ID number and Group # EMH222 when submitting to BCBSAZ for network pricing. BCBSAZ identifies an EMI Health member by their member identification number and group number.

### Please Note:

Provider participation may change at any time; use EMI's provider search to verify in-network status before receiving care. Out-of-network care may result in higher costs or limited coverage, based on your plan. For full benefit details, refer to your official plan documents.